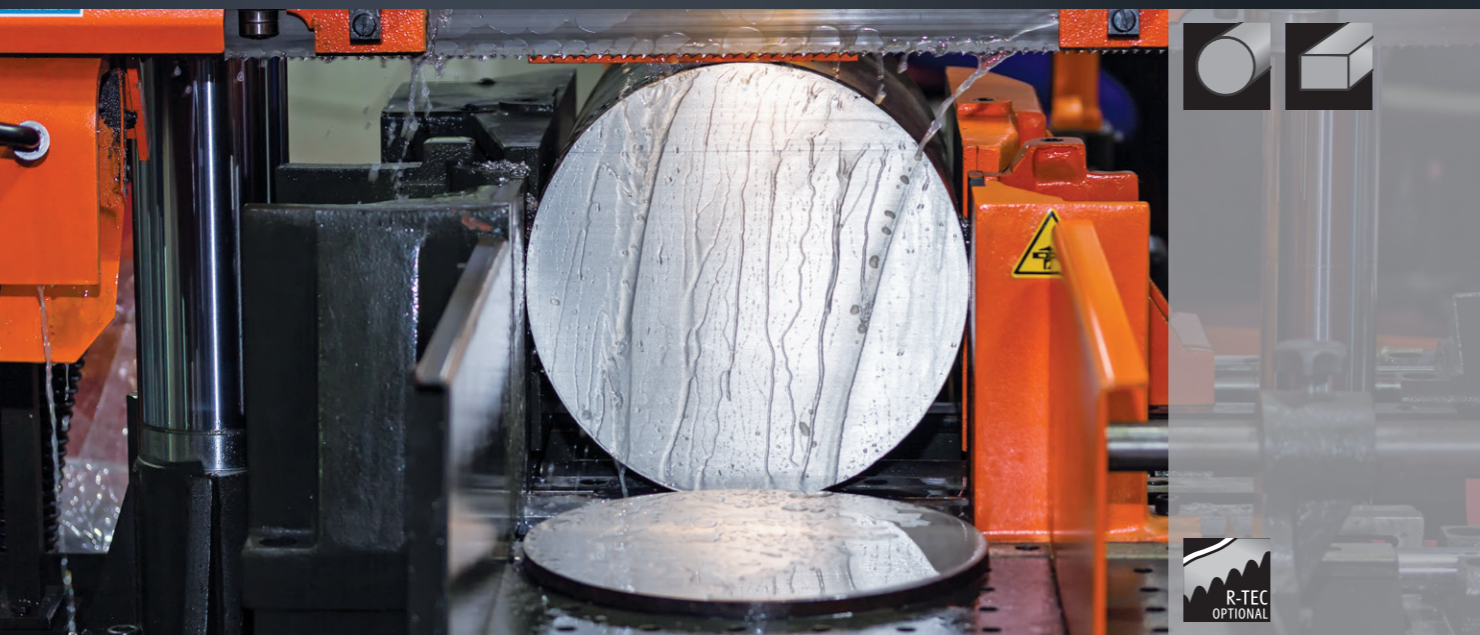


## AEROSPACE/PRECISION METAL WORKING

## 626 BLACK-LINE TC

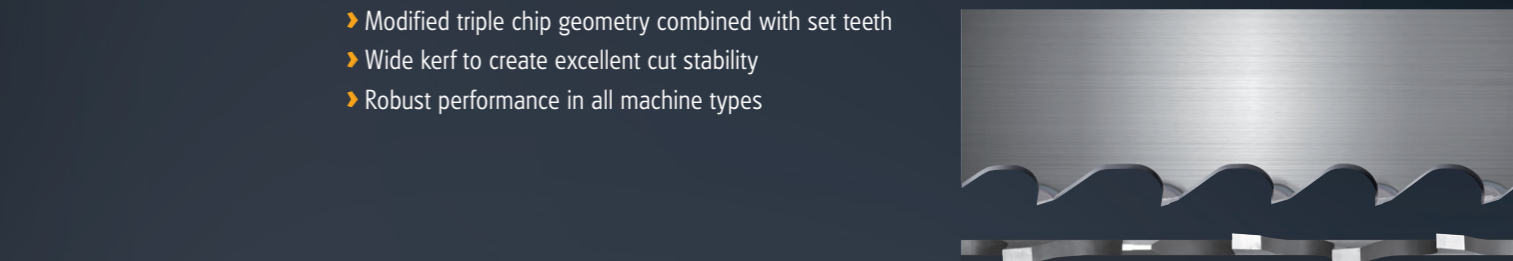
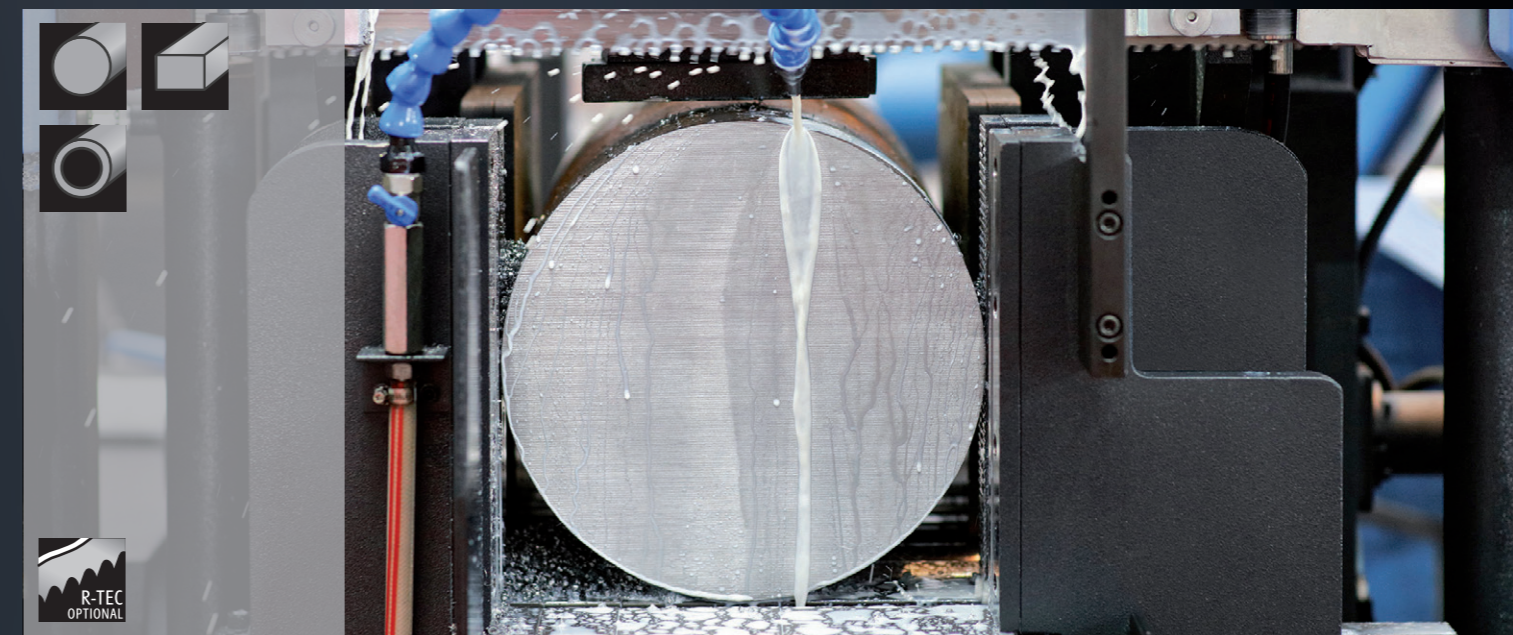


- › Robust Triple chip geometry for consistent performance
- › Positive tooth angle with high-low tooth design for increased penetration
- › Carbide grade with high resistance

Dimensions		Tooth				
mm	inch	0,75/1,25	1/1,3	1,4/2	2/3	3/4
27 x 0,90	1 x .035				■	■
34 x 1,10	1 1/4 x .042				■	■
41 x 1,30	1 1/2 x .050			■	■	
54 x 1,30	2 x .050			■	■	■
54 x 1,60	2 x .063		■	■	■	■
67 x 1,60	2 5/8 x .063	■	■			
80 x 1,60	3 x .063	■	■			

AEROSPACE/PRECISION METAL WORKING,  
STEEL MANUFACTURING

## 622 BLACK-LINE S



- › Modified triple chip geometry combined with set teeth
- › Wide kerf to create excellent cut stability
- › Robust performance in all machine types

Dimensions		Tooth			
mm	inch	1,4/2	2/3	3	3/4
20 x 0,90	3/4 x .035			■	
27 x 0,90	1 x .035		■	■	■
34 x 1,10	1 1/4 x .042		■		■
41 x 1,30	1 1/2 x .050	■	■		
54 x 1,60	2 x .063	■	■		
67 x 1,60	2 5/8 x .063	■	■		



626 STAY INFORMED



STAY INFORMED

622

## STEEL MANUFACTURING

## 650 SILVER-LINE



- › Multi-chip design
- › Developed for fast band speeds
- › High positive rake angle to increase penetration

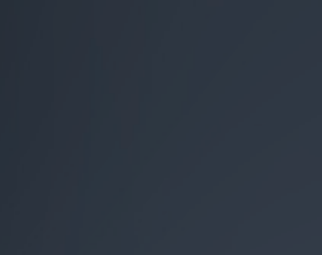
Dimensions		Tooth			
mm	inch	1/1,3	1,4/2	2/3	3/4
34 x 1,10	1 1/4 x .042			■	
41 x 1,30	1 1/2 x .050		■	■	
54 x 1,30	2 x .050			■	■
54 x 1,60	2 x .063		■	■	■
67 x 1,60	2 5/8 x .063	■	■		
80 x 1,60	3 x .063		■		



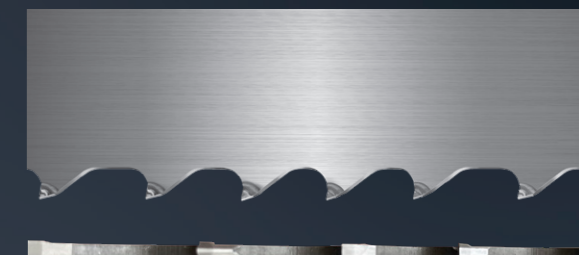
650 STAY INFORMED

STEEL MANUFACTURING,  
AEROSPACE/PRECISION METAL WORKING

## 660 SL-9



- › High performance chrome backer with enhanced carbide grade for maximum performance
- › Multi-chip geometry to provide faster cutting times
- › High positive rake angle to increase penetration



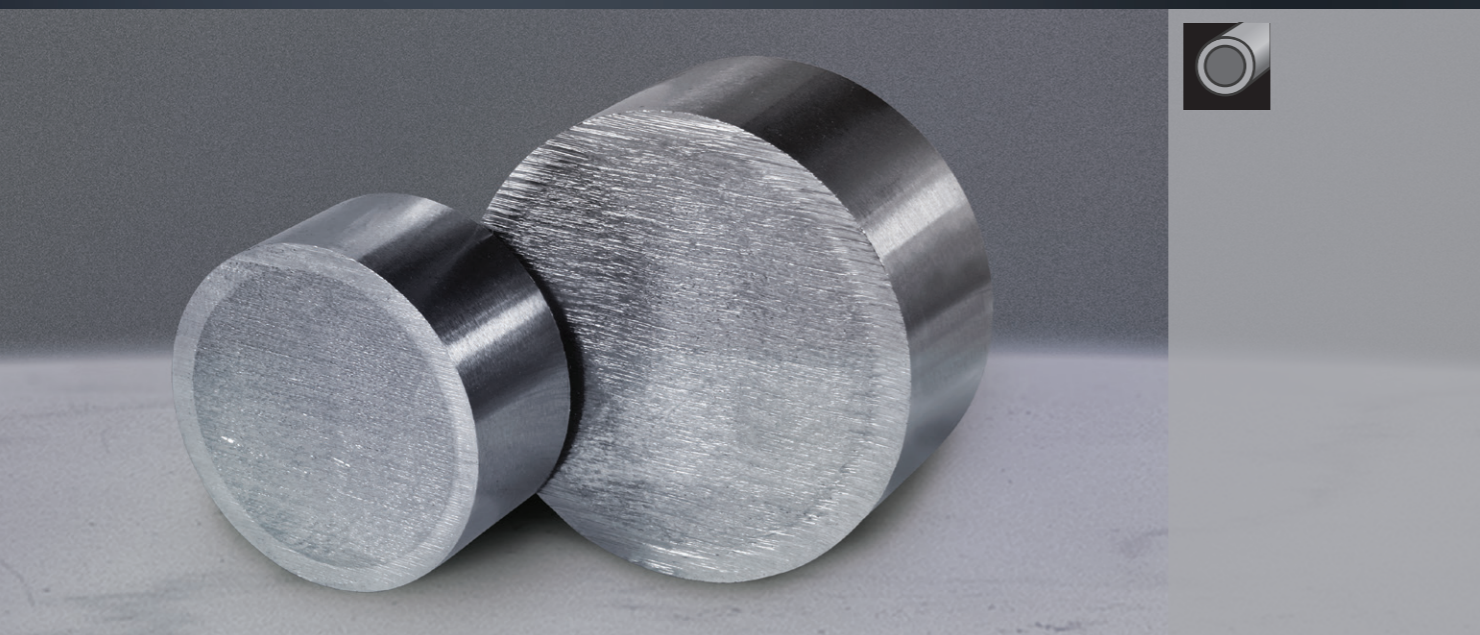
Dimensions		Tooth			
mm	inch	0,75/1,25	1/1,3	1,4/2	2/3
41 x 1,30	1 1/2 x .050			■	■
54 x 1,60	2 x .063		■	■	■
67 x 1,60	2 5/8 x .063	■	■	■	
80 x 1,60	3 x .063	■	■		



STAY INFORMED 660

## SPECIAL APPLICATIONS

## 651 SILVER-LINE N



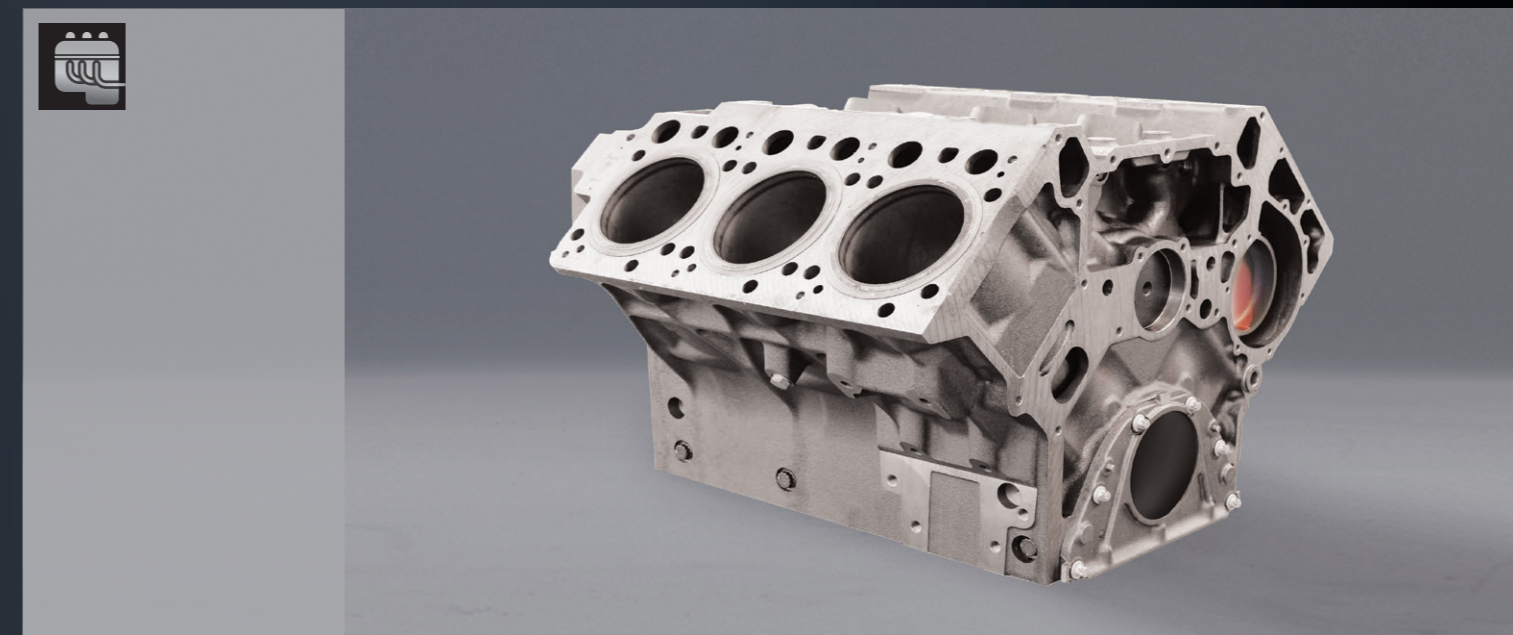
- › The expert for surface hardened workpieces
- › Special blade with negative rake angle
- › Multi chip geometry for highest cutting performance



Dimensions		Tooth	
mm	inch	2/3	3/4
27 x 0,90	1 x .035		■
34 x 1,10	1 1/4 x .042		■
41 x 1,30	1 1/2 x .050	■	■

RECYCLING/FOUNDRIES,  
AUTOMOTIVE/TRANSPORTATION

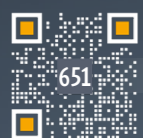
## 643 ALU-LINE



- › Triple chip design
- › Carbide grade designed for high abrasion
- › Developed for high-speed nonferrous applications



Dimensions		Tooth					
mm	inch	0,65/0,95	0,75/1,25	1,4/2	2/3	3	3/4
20 x 0,90	3/4 x .035					■	
27 x 0,90	1 x .035				■	■	■
34 x 1,10	1 1/4 x .042			■	■		■
41 x 1,30	1 1/2 x .050			■	■		
54 x 1,30	2 x .050			■	■		
54 x 1,60	2 x .063		■	■			
67 x 1,60	2 5/8 x .063		■	■			
80 x 1,60	3 x .063	■	■				



651 STAY INFORMED



STAY INFORMED

643